



*Intelligent Security Containers*



*Transport Security for High Value Items*

▼  
*Tracking*

▼  
*Secure Locking*

▼  
*Electronic Seal*

▼  
*Alarm Functions*

▼  
*Electronic Access Control*

## FMTEC Intelligent Security Containers

FMTEC Pty. Ltd. is developing and providing unique mobile Intelligent Security Containers ("Security-Smart-Boxes").

FMTEC Pty. Ltd. is setting a completely new technological standard in Supply Chain Security. The heart of the product range is the patent pend. container locking system SECOLO.

FMTEC is using this device in all kinds of small and medium size mobile Security Containers to maximise their level of security.

The latest technologies in access management, electronic locking, monitoring, alarm and low-power battery management were applied to mitigate the risks involved in shipping or storing high value or sensitive items and documents.



### Key Questions in Supply Chain Security

How can I securely lock transport boxes?

How can I manage access rights to unlock and open transport boxes?

How can I get access records from my mobile transport boxes?

How can I mitigate the risk of manipulation and tampering of my shipment?

How can I get alarm functions with mobile transport boxes?

How can I retain control and locate my transport boxes?

How can I manage the 'Human Factor' in Supply Chain Security?



### FMTEC SECOLO One Device –Multiple Security Functions

Container Locking

Container Tracking

Container Sealing "e-seal"

Container Access Management

Container Access Recording

Container Alarm

### FMTEC SECOLO Functions and Features

#### Patent pend. Locking Mechanism

- durable: up to 19.000 full operating cycles
- Smart Energy Concept, up to 8 years battery life
- robust: breaking strength up to 4000N unlocking with 80kg pre-load
- self-adjusting heavy duty locking bolt
- retrofitable to existing boxes

#### Radio Communication

- long-range identification and remote access (30m to 100m)
- transfer of access rights and alarm events via radio signal

#### Identification & Unlocking with Contactless Smart Cards and PIN-Code

- read/write contactless ISO14443 and ISO15693 smart cards or key fobs
- auto recognition of peripherals (e.g. Handheld device)

#### Monitoring & Alarm Function

- monitoring open/closed/locked status of the box
- acoustic alarm & radio signal in case of theft or lid-too-long-open

#### Tracking & Data Recording During Transport (optional)

- monitoring of temperature, humidity, shock, position, etc.
- tracking with Marker System
- GPRS add-on as customized option

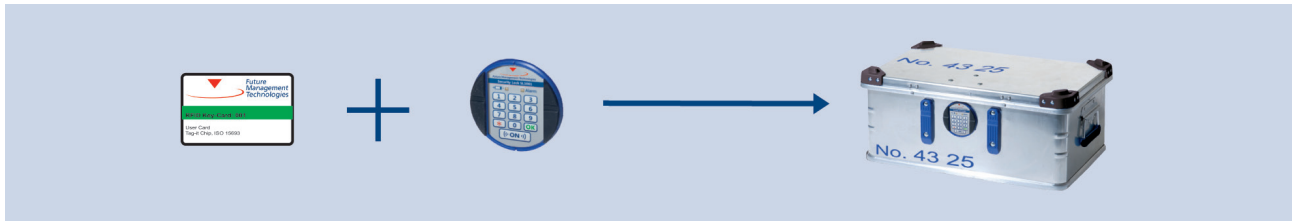


## FMTEC SECOLO – 1 Device, 3 Levels of Security Container Management

The FMTEC SECOLO-System is conceptually designed in a way that the Security Containers can be permanently adapted to new requirements. The modular system design provides possibilities for future expansions.

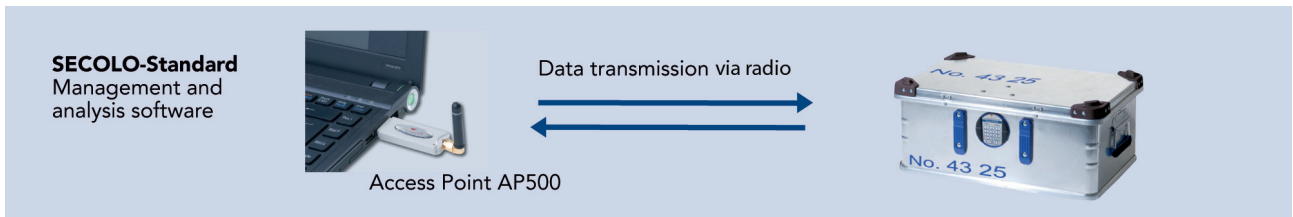
### Level 1 FMTEC SECOLO Offline Mode (Stand Alone Version - No Software)

The FMTEC Security Container in Offline Mode has basic access control functions like PIN-Code and Smart Card access. PIN-Codes and Access Cards are programmable directly into the Security Containers SECOLO Locking Device.



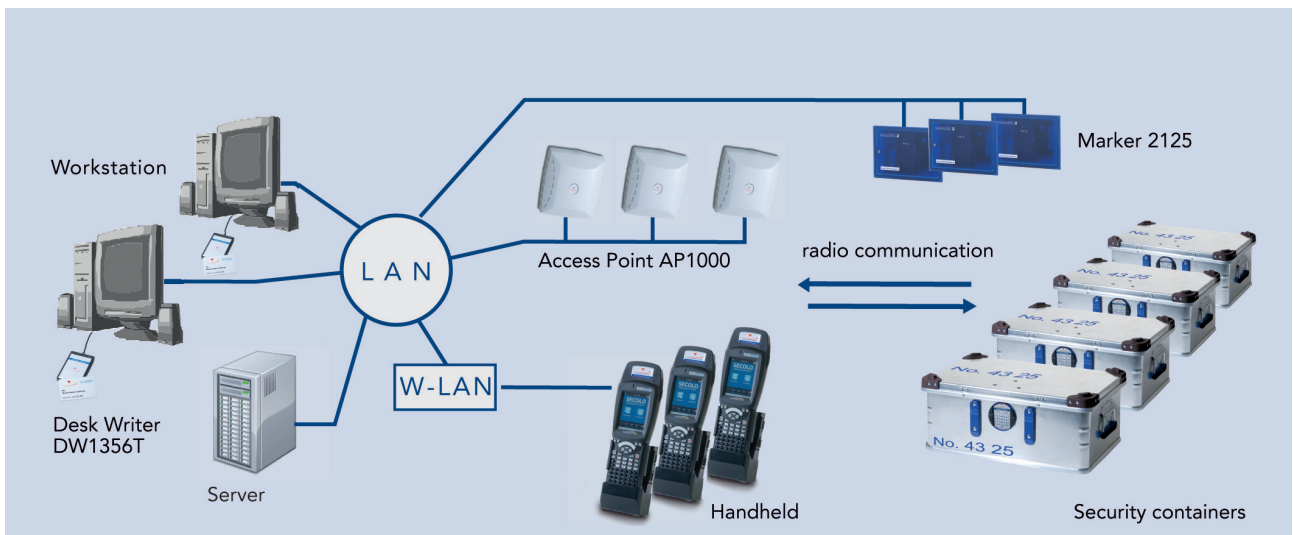
### Level 2 FMTEC SECOLO-Standard Software

The SECOLO Standard software is designed for small and medium-sized systems. Plug & Play – install the software on a PC/Laptop, plug the wireless module AP500 to the PC/Laptop USB port and the system is immediately connected to the container. Managing access rights, container inventory or evaluation of events are easy to perform. The FMTEC-SECOLO Standard software is the ideal solution for applications where the control of access rights, the analysis of access events and basic alarm functions are required.



### Level 3 FMTEC SECOLO-Professional Software

The Professional version of the software is the solution to monitor security containers online through a centralised server. Information on container movements and alarms are processed immediately. This allows online tracking of the container, but also offers new security features such as "location-based access rights". This means that a container can be opened with an authorised data carrier (Smart Card) only when the container is in a specific location (e.g. Secure Room).



## Applications for FMTec Intelligent Security Containers

### Defence

Secure Transport & Storage Containers for firearms & ammunition



### Pharmaceutical

Secure Transport Boxes for high value and critical pharmaceuticals



### Secure Document Destruction

Secure Bins for document shredding



### Cash Handling

Secure Transport Containers for cash in transit



### Retail

Secure Transport Containers for high value consumer goods



### Government & Banking

Security Transport Boxes for classified material, data and documents



### Jewellery Industry

Security Transport Containers for jewellery items



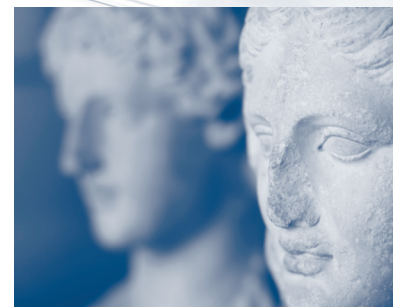
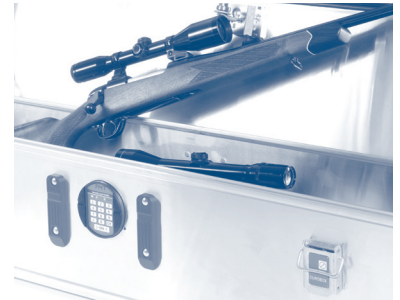
### Logistics

Security Transport Boxes for hazardous, high value or classified items



### Art/Museums

Security Transport Boxes for artefacts, instruments and documents



### FMTec Pty. Ltd.

Intelligent Security Containers  
P.O.Box 4101  
Maroubra (South), NSW 2035  
Australia  
Phone: +61 (0)2 9344 6071  
Mobile: +61 (0)422997669  
Email: marc@fmttec.com.au

Distributed by